

ENT/ALLERGY



Lovina Sabnani, DO
 Otolaryngologist



Mark Sakai, DO
 Otolaryngologist

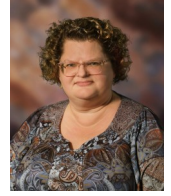


Hanna Moore, PA

GYNECOLOGY



Janine Doneza, MD
 Gynecologic Surgeon

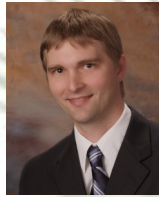


Celeste Adrian, MD
 OB/GYN Surgeon

GENERAL SURGERY



Victor Bochkarev, MD
 Surgeon



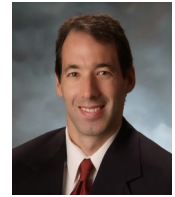
Daniel Hudak, MD
 Surgeon



Eric Lau, MD
 Surgeon



Andrew Lind, MD
 Surgeon



Joshua Pierce, MD
 Surgeon

UROLOGY



Antonio Montgomery, MD
 Urologist



Lyric Santiago, MD
 Urologist



Richard Stack, MD
 Urologist

VASCULAR SURGERY



Abraham Korn, MD
 Vascular Surgeon



John Matsuura, MD
 Vascular Surgeon



Kelly Luscomb, NP



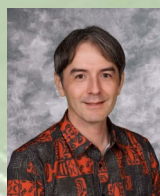
Todd Glass, PA-C



Zakari Aliyu, MD
 Medical Oncology/
 Hematology



Linda S. Gemer, MD
 Radiation Oncology



Patrick Jewell, MD
 Radiation Oncology



Kevin Wilcox, MD
 Radiation Oncology



Noemi Libed-Arzaga, DNP
 Medical Oncology



Franceska Severe-Dejoie, APRN
 Medical Oncology

Primary Care



Anna Maisu, MD
 Family Physician



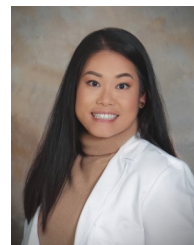
Tod Sugihara, DO, FFAFP
 Family Physician



Katrina Chong-Tercero, PA-C



Kimberly Dufraux, DNP



Chayata Otsuka, DNP

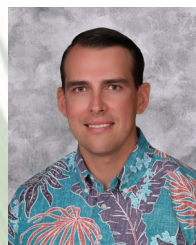
Urgent Care



Jaime Parra, MD



Krystal Buttitta, PA-C



Zachary Henderson, PA-C



Joan Manzella, APRN

CLINIC LISTINGS

1285 Waianuenu Avenue, 1st Floor

Cancer Center | Urgent Care

| | | |
|--------------------|-------------------|-------------------|
| Radiation Oncology | p: (808) 932-3755 | f: (808) 932-3756 |
| Medical Oncology | p: (808) 932-3590 | f: (808) 974-6864 |
| Infusion Room | | f: (808) 933-3813 |

| | | |
|--------------------|-------------------|-------------------|
| Urgent Care | p: (808) 932-3720 | f: (808) 932-3728 |
|--------------------|-------------------|-------------------|

1285 Waianuenu Avenue, 2nd Floor

Primary Care | ENT | Obstetrics | Gynecologic Surgery General Surgery | Pulmonology | Urology | Vascular

Main Line: (808) 932-3940

| | | |
|---------------------|-------------------|-------------------|
| Primary Care | p: (808) 932-3940 | f: (808) 933-0011 |
| ENT | p: (808) 933-3800 | f: (808) 933-3801 |
| Obstetrics | p: (808) 932-3940 | f: (808) 933-0011 |
| Gynecologic Surgery | p: (808) 932-3775 | f: (808) 932-3781 |
| General Surgery | p: (808) 932-4225 | f: (808) 935-0904 |
| Pulmonology | p: (808) 932-3860 | f: (808) 932-3865 |
| Urology | p: (808) 932-4240 | f: (808) 969-1020 |
| Vascular | p: (808) 932-3850 | f: (808) 932-3855 |